

GUIDED TRIPS



With 10 years experience in providing guided trips let us take care of the planning and logistics of your canoe or kayak trip.

We'll work with you to plan where we'll paddle. WRO will prepare the meals and even provide tents and sleeping bags if needed.

We provide both canoe and kayak trips anywhere in the state of Wisconsin, whether it's our home base of the Wisconsin River, Mississippi River, the Flambeau River or Lakes Superior or Michigan.

All this and you'll still paddle our professional fleet of Wenonah Canoes and Current Designs Kayaks.



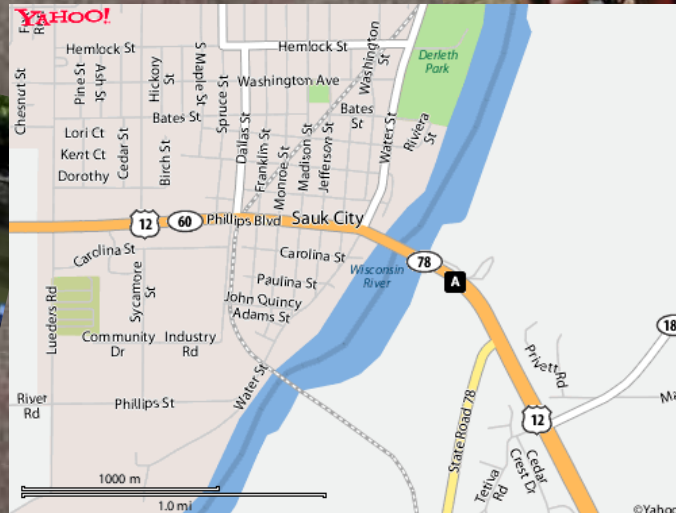
Boscobel Location

This map is of our most popular put in at our Boscobel Location. You'll drop gear and people off and then continue west on WI 133 to the town of Boscobel. We'll then drive you back up river along with your canoes.



Sauk City Location

Located 35 min. north of Madison at 7554 US HWY 12, Sauk City, WI 53583 at the corner of US 12 and the WI River.



WI RIVER OUTINGS

866.41.CANOE - 86641CANOE.COM

Guided Trips, Canoe and Kayak Rentals, Livery



2 Locations to serve you better:

Boscobel & Sauk City, WI

CANOE AND KAYAK RENTALS

We pride ourselves in maintaining the youngest and best quality canoe and kayak fleet in Wisconsin, if not the Midwest. That's why we only rent Wenonah Canoes and Current Designs Kayaks—Made in the USA.

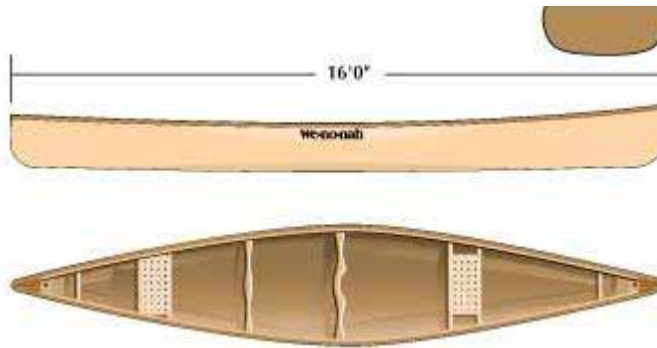
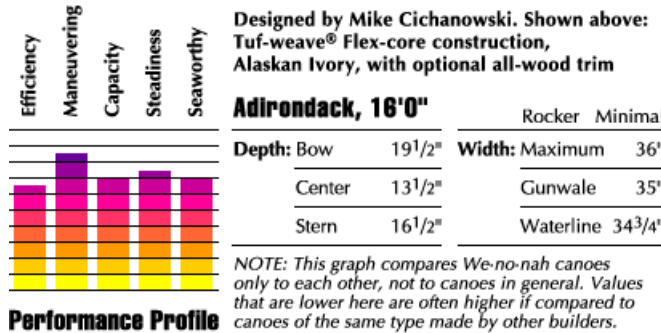
All rentals include boat, PFD (Personal Flotation Device) and transport. Call for details. Our canoes are designed for 2 adults and one child under 70 lbs.



About Our Canoes

After purchasing Rent-A-Canoe in 2003 the decision was made to replace the aluminum canoe fleet we'd purchased with the business. After much thought and consideration we decided that we wanted light canoes so they are easier to load/unload, quieter canoes to enhance our customer's experience on the water, more comfortable seats (again, to enhance and make our customers more comfortable) and canoes that are stable, responsive and easy to handle. We decided that the Wenonah Canoe Adirondack in royaalex (a type of plastic layup) was the best option for WRO and our customers.

Friends Don't Let Friends Rent Aluminum Canoes



LIVERY SERVICES

WRO would be happy to transport your own boat for you. Keep in mind that if you bring fellow paddlers and they rent from us we'll transport your boat for \$10.00.

The cost is \$2 per river mile for the first boat and \$10 for each additional boat. We'll meet you at your desired takeout PRIOR to your trip and take you up river from there. That way, when you're done with your trip, you can pack your car and leave at your leisure.

SCOUTS AND NON-PROFITS

WRO is the #1 source for Boys and Girls Scouts, church groups and other non-profit organizations that are looking to provide a quality experience at a reasonable price with excellent service and experience.



All one has to do is ask our repeat customers. Year after year, we see returning Scout Leaders and trip organizers that know we'll meet their needs, if not exceed them.

These groups know that they're going to get the same great equipment as our regular rental and guided trip customers and meet their needs for increased numbers of boats and assistance in planning trips.

DON'T WAIT! It's a short season and we book up quickly. Give us a call and we'll help you get your trip together and your group on the water.



Weather Policy

First and foremost, *paddling is a wilderness experience* so we do expect you to have rain gear and be prepared. We will not come pick you up early from your trip simply because it has started raining and you've failed to prepare.

If you decide to cancel within 7 days of your start date because of rain in the forecast, Wisconsin River Outings will provide you with a same season paddle credit. You can then reschedule your trip at a later date, based on availability.

Providing you arrive at our location on the day of your reservation, if there is lightning at 12 PM (Noon) on the day of your departure, we will not put you on the water and we will give you a full refund. If you cancel over the phone, we will give you a same season paddle credit only. Rain is not a reason to refund your trip.

Once your trip has begun, there are no refunds or credits.

High Water Policy

There are times in the Spring as well as during wet summers when, for safety, we will not put people on the river. We know how packed your schedule can be so we do have several options to still get you on the water, contact us for additional information. The following are the parameters we use on the morning of your trip for not putting people on the river during high water:

Single Day Rentals: USGS readings at Muscoda of 20,000 cf/s

Multiday Rentals: USGS readings at Muscoda of 17,000 cf/s

These readings can be found on our website and the U.S. Geological Survey website, www.usgs.gov.

Lightning Safety Tips

The Following Lightning Safety Guidelines Have Been Adapted and Excerpted from "The National Outdoor Leadership Schools Wilderness Guide" by Mark Harvey (1999)

1. Stay off high peaks and ridges. The higher you are, the greater the chance of getting struck.
2. Stay away from shallow caves and overhangs. Although they may look safe, the electricity can jump these small gaps and electrocute you.
3. Stay away from lone, tall objects like single trees in an open field. They are likely to be hit, and you could be hit by the ground current. If you can't avoid this situation, then crouch in the "cone of protection". Project a line from the lone object, often a tree, at a 45 degree angle. This forms an imaginary circle around the object that you should stay at.
4. Avoid metal objects and bodies of water. They are good conductors and can attract lightning. This includes metal pack frames, trekking poles, aluminum canoes, tent poles, etc.
5. If you are in a group, separate yourselves by at least 30 feet. That way, others can give first aid if one person is struck. If you stay in one big bunch, then there will be nobody to help if you all get struck.
6. Avoid wide open spaces. You are at a greater risk of being struck if you are the only thing around. The best place to be during a lightning storm is in a large group of trees.
7. Assume the Lightning position by insulating yourself from the ground with your sleeping pad. This will help with ground current, which is what kills most people in lightning-related accidents. Crouch on this pad with your toes pointing downhill and your heels together. This will allow the current to run through your feet rather than your whole body in the event that the ground current finds you.

WI RIVER OUTINGS

866.41.CANOE

86641canoe.com

715 Wisconsin Ave.

Boscobel, WI 53805

WRO Sauk City
7554 US Hwy 12
Sauk City, WI 53583

Canoe Care Guidelines

WRO is very proud of the boats we have to offer you and your group. However, with great canoes comes **responsibility**. Below are the **rules you've agreed to** in your signed Assumption of Risk Agreement. We believe they are very **basic and common sense**, we are trying to avoid the need for **you to purchase a damaged boat**, please read carefully.

[Guided Trips](#)

[Rentals](#)

[Instruction](#)

[Boy Scouts](#)

[Girl Scouts](#)

[Indian Guides](#)

[Church Groups](#)

[Singles](#)

[Corp. Outings](#)

[Meeting Planners](#)

[Families](#)

[Neighborhoods](#)

[Reunions](#)

- **Treat every canoe with respect**; it's going to get you and your gear all the way through your trip.
- Use **two people to carry an empty canoe**, right side up and using the wood handles at each end of the canoe.
- **Do not sit or stand** in the canoe when it is not in the water. This does damage to the hull and is rough on the boat overall.
- **Do not drag or drop** the canoe. Place the canoe gently in the water.
- You should load **your canoe while it is in the water**. Please do not load your boat on shore and then DRAG the boat into the water. It's rough on the boat and on your back.
- **DO NOT use our canoes to sit on** when rolled over.
- **DO NOT use the canoes as a table** for a HOT stove, the boat will melt and you'll own a canoe with a hole in it, you don't want that and neither do we.
- At the end of the day be sure to **pull your boat all the way out of the water**. Water levels can fluctuate 6" or more overnight, you don't want to finish your trip swimming.
- Please **do not use our paddles as fire pokers**; again, you don't want to own a melted paddle.
- When you finish your trip, as much fun as it may seem, **DO NOT run the boats up on the boat landings**. It's VERY hard on the bows which could require replacement.

Follow these simple rules and not only will you have a great time on the water, the boat you used will be available for you next year in the same condition you got it in.

Thank you and Happy Paddling!

The WRO Crew

The Wisconsin paddlesports leader.



CANOE
We·no·nah Current Designs

WI RIVER OUTINGS

866.41.CANOE

86641canoe.com

715 Wisconsin Ave.

Boscobel, WI 53805

WRO Sauk City
7554 US Hwy 12
Sauk City, WI 53583

Suggested Packing List for Canoe Rentals

We **HIGHLY** recommend renting one of our huge dry bags (\$10) for your sleeping bag and change of clothes. Generally, one dry bag per canoe will be enough. Trash bags **DO NOT WORK!**

[Guided Trips](#)

[Rentals](#)

[Instruction](#)

Keep in mind; most people are on the river for 24 hours. There's no need to over pack and you don't need "the kitchen sink." The objective is **NOT** to see how much you can bring...but how little and still meet your needs.

Clothing

- Rain jacket and pants
- Sweatshirt, jacket or fleece
- Cotton, lightweight, long sleeve shirt – for sun protection
- Sunglasses
- Wrist watch
- Add gloves, stocking cap, long underwear for spring or fall trips
- Cap with sun visor or wide brim

Cooking/Food

- 1 gallon of water for each person per day
- Stove w/fuel
- Pots/Pans/Measuring Cups/Potholders
- Utensils for cooking and eating
- Plates/bowls
- Food for meals on the river
- Aluminum foil, Paper towels, Extra zip lock bags
- Snacks
- Biodegradable soap, Dish towels, Spice kit
- Trash bags

The Other Stuff

- Sleeping bag, pillow, sleeping mat
- Tent
- Flashlight or headlamp w/ fresh batteries
- Personal toilet articles and toilet paper
- Camp saw (a hatchet won't do you much good), Waterproof matches
- First Aid Kit w/ pain reliever, Afterbite, sunscreen and Chapstick
- Camera
- Paperback book
- Playing cards, Frisbee, sand toys

[Boy Scouts](#)

[Girl Scouts](#)

[Indian Guides](#)

[Church Groups](#)

[Singles](#)

[Corp. Outings](#)

[Meeting Planners](#)

[Families](#)

[Neighborhoods](#)

[Reunions](#)

The Wisconsin paddlesports leader.



CANOE
We·no·nah **Current Designs**

SimpleTek Solutions, INC, DBA WI River Outings
ASSUMPTION OF RISK AND WAIVER AGREEMENT

All adventure activities have inherent risks of physical injury associated with them. The guided canoe trips, canoe rental and kayak rental offered by Wisconsin River Outings (WRO) are adventure activities and there is risk associated with being a participant.

Assumption of Risk: I, _____ understand that canoeing and kayaking exposes me to many hazards and participating in a WRO canoeing, kayaking and camping adventure entails unavoidable risk of death, personal injury and loss of or damage to property. I choose to participate in this trip in spite of these risks and hereby assume all risk of injury or loss of life to myself and loss of or damage to property arising out of my participation in such a trip.

Waiver: In consideration of WRO furnishing services and equipment to enable me to participate in a canoeing/kayaking trip, I specifically release and forever discharge WRO and its officers, agents and employees from any and all liability or claims for any injury, illness, death or loss of or damage to property which I may suffer while participating in this canoeing/kayaking trip.

In signing this document, I fully recognize that if injury, illness, death or damage occurs to me while I am engaged in this canoeing/kayaking trip, I will have no right to make a claim or file a lawsuit against WRO or its officers, agents or employees, even if they or any of them negligently cause me injury, illness, death or damage.

- I understand that though this maybe a guided canoe trip, there will be times when the guide(s) or other participants may not be in a position to assist, or aid in my rescue in the case of a mishap or the occurrence of a problem.
- I understand that WRO recommends that all participants have the physical ability to assist in their own rescue.
- I understand that wearing a properly sized, adjusted and buckled personal flotation device (PFD) is critical to my safety.
- I hereby grant WRO the right to take and utilize photographs of me participating in trip related activities for the purpose of promotion and advertising.

This Waiver also releases and discharges any and all liability and responsibility of the landowner, Lake WI 2 LLC and Ray's Riverside, who are lessors of the property and who are not involved, directly or indirectly with, or participate in, the rental or operation of the canoe and kayak business or tours, for any injury, death or loss of, or damage to, property. The landowner is not involved in, responsible for the condition of, the services, equipment or transportation offered and provided by WRO.

If any portion or provisions of this Assumption of Risk and Waiver Agreement is or are deemed unenforceable by a Court of Law, the remaining portions and provisions shall remain in full force and effect.

I also understand that if WRO needs to retrieve my canoe/kayak due to losing it on the river I am responsible for a recovery fee of \$175.00 or the cost of the canoe/kayak if it cannot be found/recovered.

I HAVE CAREFULLY READ THIS AGREEMENT AND UNDERSTAND ITS CONTENTS. I AM AWARE THIS IS A WAIVER AND A RELEASE OF LIABILITY AND I SIGN IT VOLUNTARILY.

Signature _____ Date _____

Signing this waiver for my child or child I'm a guardian of.

SimpleTek Solutions, INC, DBA WI River Outings
ASSUMPTION OF RISK AND WAIVER AGREEMENT

All adventure activities have inherent risks of physical injury associated with them. The guided canoe trips, canoe rental and kayak rental offered by Wisconsin River Outings (WRO) are adventure activities and there is risk associated with being a participant.

Assumption of Risk: I, _____ understand that canoeing and kayaking exposes me to many hazards and participating in a WRO canoeing, kayaking and camping adventure entails unavoidable risk of death, personal injury and loss of or damage to property. I choose to participate in this trip in spite of these risks and hereby assume all risk of injury or loss of life to myself and loss of or damage to property arising out of my participation in such a trip.

Waiver: In consideration of WRO furnishing services and equipment to enable me to participate in a canoeing/kayaking trip, I specifically release and forever discharge WRO and its officers, agents and employees from any and all liability or claims for any injury, illness, death or loss of or damage to property which I may suffer while participating in this canoeing/kayaking trip.

In signing this document, I fully recognize that if injury, illness, death or damage occurs to me while I am engaged in this canoeing/kayaking trip, I will have no right to make a claim or file a lawsuit against WRO or its officers, agents or employees, even if they or any of them negligently cause me injury, illness, death or damage.

- I understand that though this maybe a guided canoe trip, there will be times when the guide(s) or other participants may not be in a position to assist, or aid in my rescue in the case of a mishap or the occurrence of a problem.
- I understand that WRO recommends that all participants have the physical ability to assist in their own rescue.
- I understand that wearing a properly sized, adjusted and buckled personal flotation device (PFD) is critical to my safety.
- I hereby grant WRO the right to take and utilize photographs of me participating in trip related activities for the purpose of promotion and advertising.

This Waiver also releases and discharges any and all liability and responsibility of the landowner, Lake WI 2 LLC and Ray's Riverside, who are lessors of the property and who are not involved, directly or indirectly with, or participate in, the rental or operation of the canoe and kayak business or tours, for any injury, death or loss of, or damage to, property. The landowner is not involved in, responsible for the condition of, the services, equipment or transportation offered and provided by WRO.

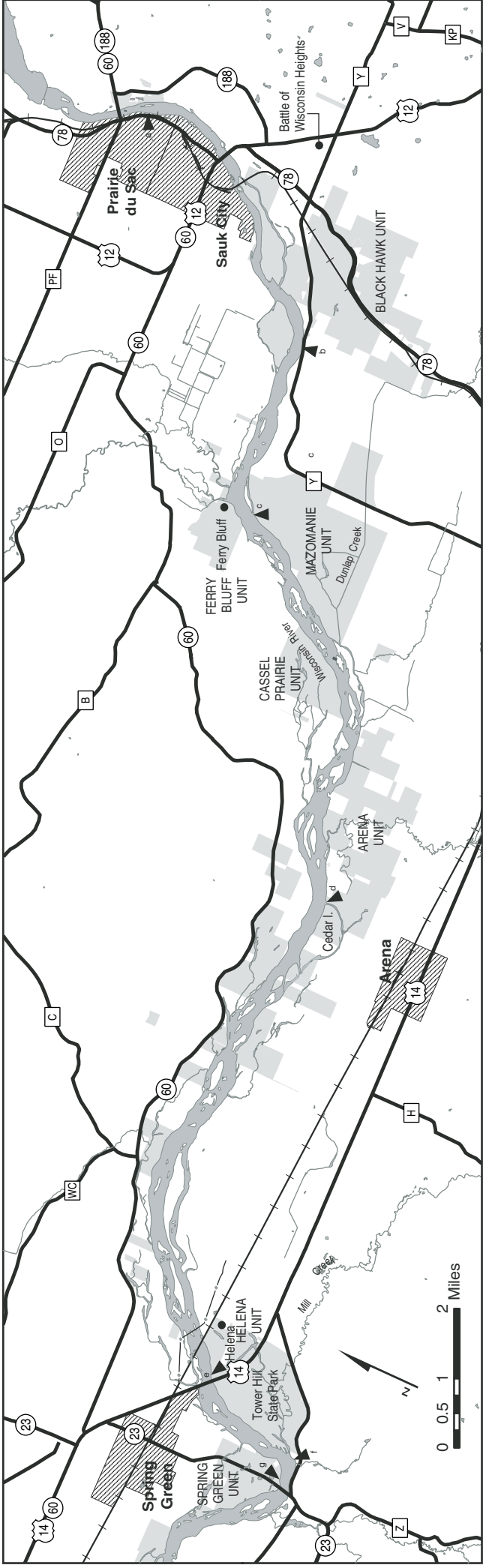
If any portion or provisions of this Assumption of Risk and Waiver Agreement is or are deemed unenforceable by a Court of Law, the remaining portions and provisions shall remain in full force and effect.

I also understand that if WRO needs to retrieve my canoe/kayak due to losing it on the river I am responsible for a recovery fee of \$175.00 or the cost of the canoe/kayak if it cannot be found/recovered.

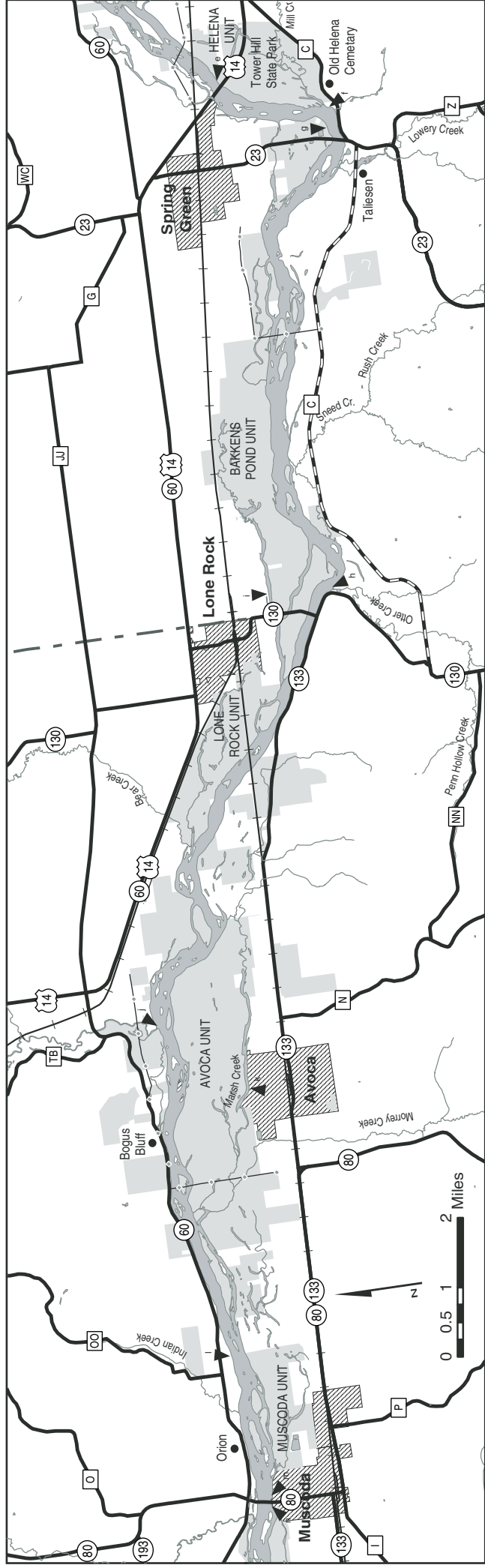
I HAVE CAREFULLY READ THIS AGREEMENT AND UNDERSTAND ITS CONTENTS. I AM AWARE THIS IS A WAIVER AND A RELEASE OF LIABILITY AND I SIGN IT VOLUNTARILY.

Signature _____ Date _____

Signing this waiver for my child or child I'm a guardian of.

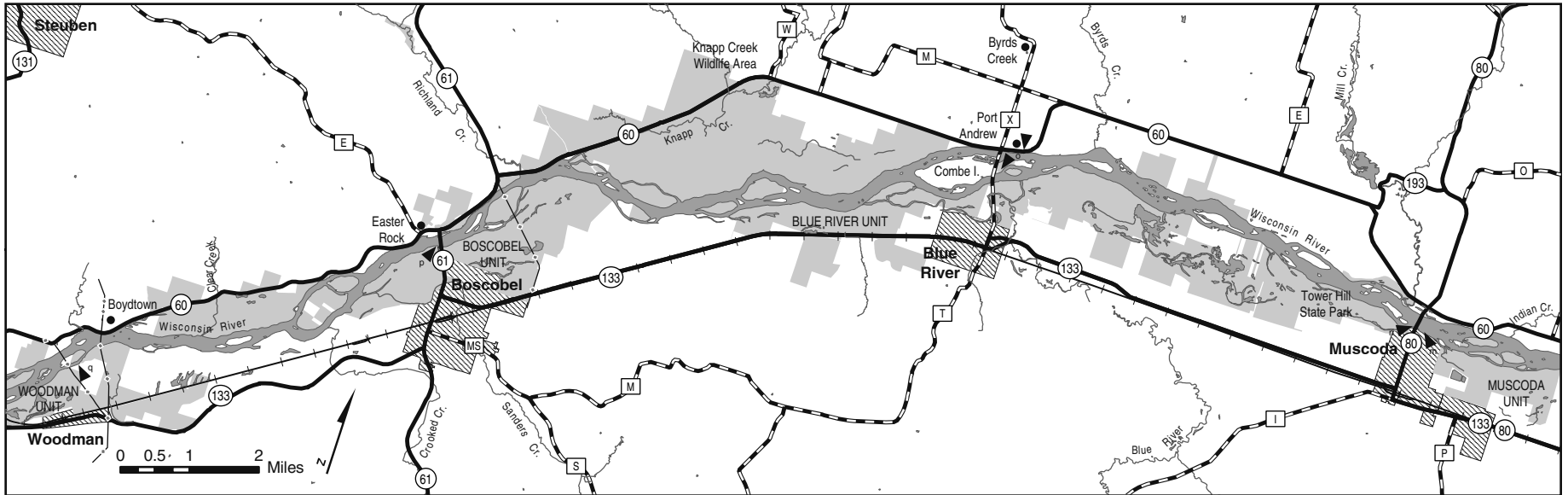


Prairie du Sac to Spring Green Segment

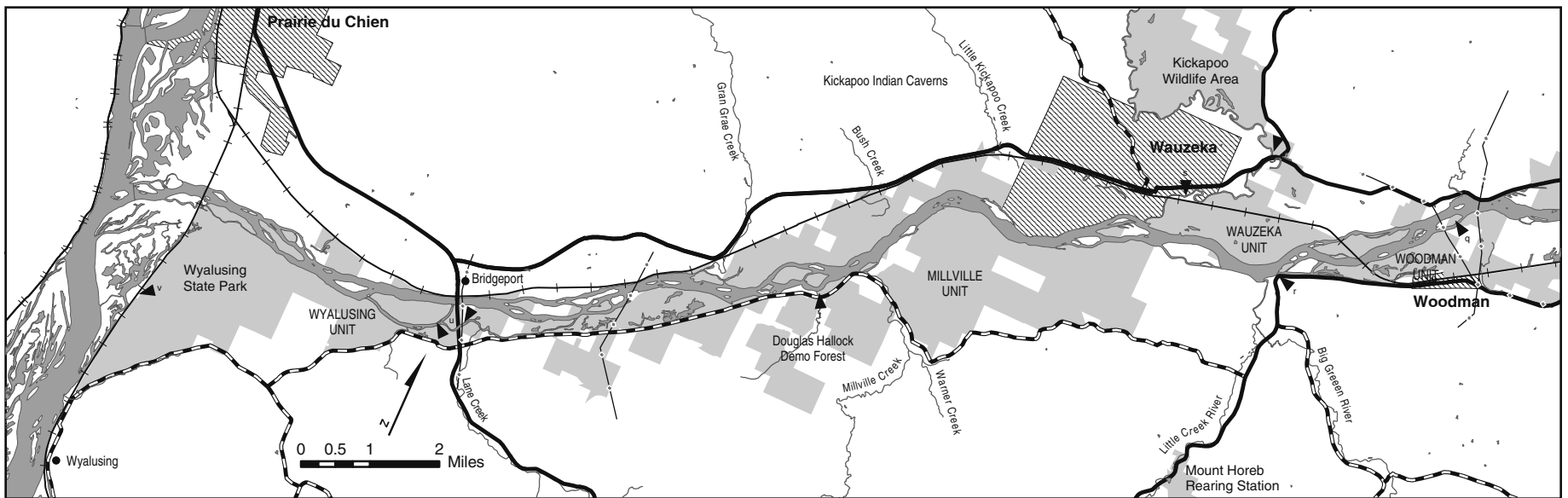


Spring Green to Muscodia Segment

- Key**
- ▼ Major access point
 - State-owned (DNR) land
 - Lower Wisconsin State Riverway



Muscoda to Woodman Segment



Woodman to Prairie du Chien Segment

- Key**
- ▼ Major access point
 - State-owned (DNR) land
 - Lower Wisconsin State Riverway
 - - - Powerline crossing

WI River Outings

866.41.CANOE - www.86641canoe.com

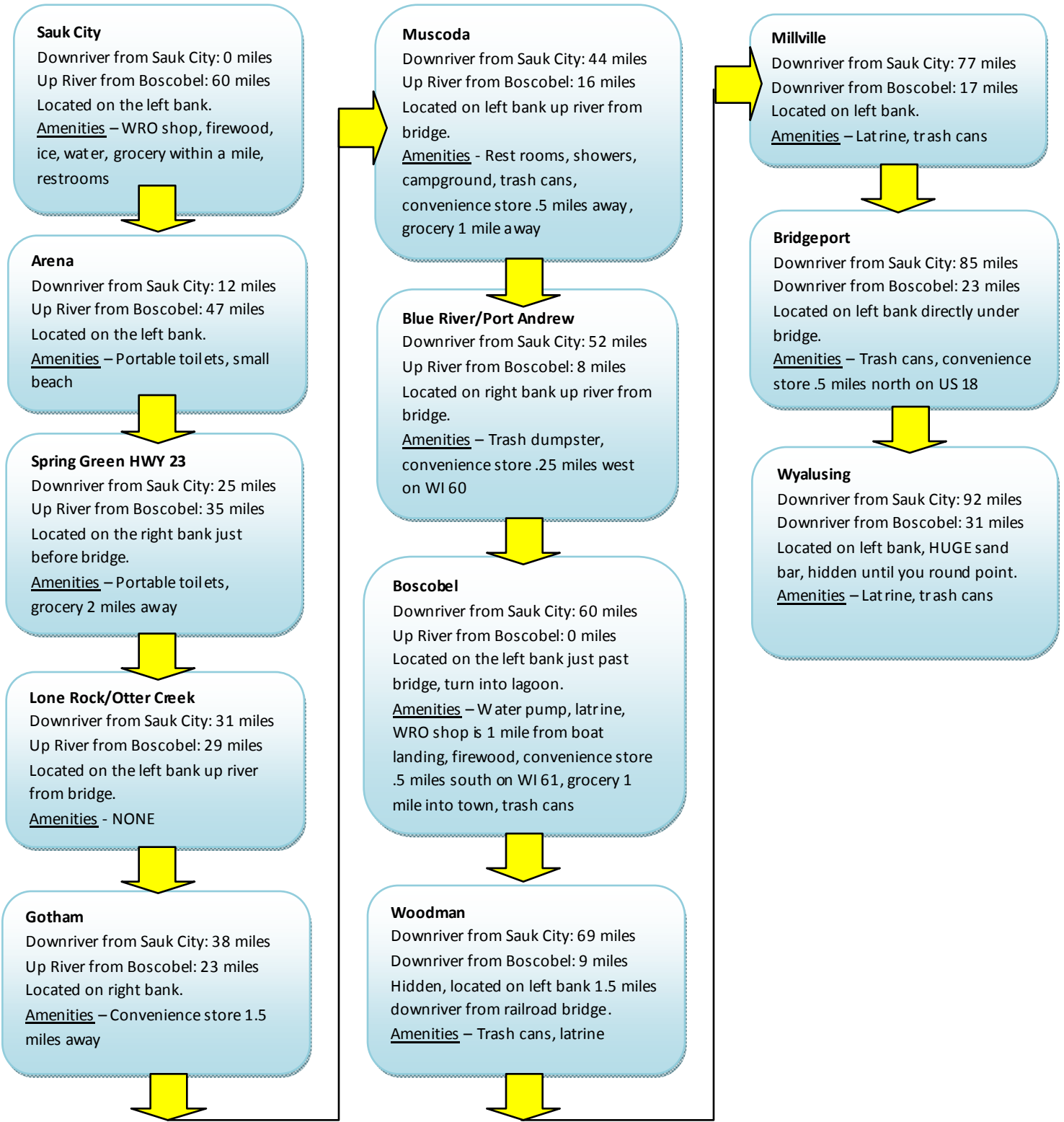
GPS Coordinates for our two locations and boat landings on the Lower Wisconsin River

	Address	Degrees	Minutes	Seconds		Degrees	Minutes	Seconds	
Our Sauk City Location	7554 US HWY 12, 53583	43	16	10.3	North	89	43	2.75	West
Sauk City Rail Bridge		43	15	54.4	North	89	43	37.35	West
Ferry Bluff Hike		43	14	21.45	North	89	48	36.52	West
Arena Boat Landing		43	11	12.11	North	89	53	4.21	West
Spring Green Rail Bridge		43	10	26.92	North	90	2	0.33	West
Spring Green HWY 14 Boat Landing		43	10	5.75	North	90	2	25.7	West
Spring Green HWY 23 Boat Landing		43	8	46.65	North	90	3	36.73	West
Lone Rock Boat Landing		43	9	38.76	North	90	11	14.32	West
Lone Rock Rail Bridge		43	10	55.15	North	90	13	36.5	West
Gotham Boat Landing		43	12	44.11	North	90	18	6.4	West
Muscoda Boat Landing		43	11	58	North	90	26	15.56	West
Blue River/Port Andrew Boat Landing		43	12	17.9	North	90	34	10.73	West
Boscobel Boat Landing		43	9	6.64	North	90	42	54.34	West
Our shop in Boscobel	715 Wisconsin Ave, 53805	43	8	14.3	North	90	42	20.5	West
Woodman Rail Bridge		43	5	17.77	North	90	49	22.1	West
Woodman Boat Landing		43	4	37.32	North	90	50	45.2	West
Millville Boat Landing		43	2	3.91	North	90	57	39.31	West
Bridgeport Boat Landing		43	0	5.3	North	91	3	9.07	West
Bridgeport Rail Bridge		43	0	0	North	91	7	51.54	West
*Wyalusing Boat Landing		42	56	52.02	North	91	8	40.13	West

* WRO only picks up at the public boat landing in the town of Wyalusing (also known as Wyalusing Beach), NOT the State Park

WI RIVER OUTINGS

Boat Landing Information from east to west, upriver to downriver landings



WI RIVER OUTINGS

866.41.CANOE – 86641canoe.com

Shop and Boat Landing Driving Directions

ALWAYS travel with a map! BE SURE you know where you will be starting your canoe trip (put-in location). DO NOT follow your GPS with blind faith!

Sauk City Rentals – Please come directly to our shop where you will be putting on the water and we will arrange for your transportation back up river at the end of your trip.

Boscobel Rentals – Be sure to drop off your passengers and gear at your put-in location FIRST. *ONLY the drivers will drive down river to our shop to check in.* We will escort the drivers to the take-out location (where your trip ends) to park their cars. We will then bring the drivers and canoes back up river to the put-in location.

Click on your put-in location below. Please print the directions, forward them to your group and bring them with you the day of your trip.

[Sauk City Shop](#)

[Arena](#)

[Spring Green HWY 23](#)

[Lone Rock](#)

[Gotham](#)

[Muscoda](#)

[Port Andrews/Blue River](#)

[Boscobel Shop](#)

[Woodman](#)

[Millville](#)

[Bridgeport](#)

[3 River Trip Put in](#)

[Town of Wyalusing Beach](#)

Sauk City Shop

GPS Coordinates: 46° 16' 10.3" North, 89° 43' 2.75" West

Physical Address: 7554 US HWY 12, Sauk City, WI 53583

Description: Our shop is located on the southeast corner of US HWY 12 and the WI River. All trips for our Sauk City location start at our shop. Transportation will be arranged for your pickup downriver before you depart our riverside location.

From Madison:

- From I-90/94/39 take exit 131, WI 19 West.
- Stay on US HWY 19 for 11 miles to US HWY 12 West.
- Take HWY 12 West 10.5 miles to our shop, which is the last right before going over the bridge into Sauk City. Look for the white building and the red canoe on end that reads "Canoe Rentals"

Arena Boat Landing

GPS Coordinates 43° 11' 12.11" North, 89° 53' 4.21" West

Description: Located approximately 1 mile north of Arena, WI. The boat landing is on the left bank of the river.

For Boscobel customers coming from Madison:

- From I-90/39, exit 142A onto US HWY 12/18 West.
- Stay on US HWY 12 West to exit 266, US HWY 14 West toward Spring Green/La Crosse.
- Stay on US HWY 14 West for 23 miles to Willow Street in Arena, WI.
- Turn right (North) on Willow Street.
- Follow Willow Street all the way to the boat landing at the end of the road.

From the Boat Landing to Boscobel:

If you are ending your trip at our Boscobel take-out location, DROP OFF your passengers and gear at the starting point boat landing. DRIVERS ONLY will:

- Return to HWY 14 and make a right (west).
- Go 15 miles on US HWY 14 West to the town of Lone Rock.
- Turn left (South) onto WI 133 South.
- Follow WI 133 South for 28 miles to the town of Boscobel.
- When you get into Boscobel, you will go across a small bridge
- Take the next left onto Wisconsin Ave.
- Our shop is located .25 miles on your left across the street from Tall Tails convenience store.

Spring Green HWY 23 Bridge

GPS Coordinates 43° 8' 46.65" North, 90° 3' 36.73" West

Description: Located approximately 2 miles south of the town of Spring Green. The boat landing is on the north side of the river, across the river from the Frank Lloyd Wright Visitors Center.

From Madison:

- From I-90/39, exit 142A onto US HWY 12/18 West.
- Stay on US HWY 12 West to exit 266, US HWY 14 West toward Spring Green/La Crosse.
- Stay on US HWY 14 West for 30 miles to WI HWY 23 in Spring Green, WI.
- Turn left (south) on WI HWY 23 for 2.8 miles.
- The entrance to the boat landing is on the left before the bridge.

From the Boat Landing to Boscobel:

If you are ending your trip at our Boscobel take-out location, DROP OFF your passengers and gear at the starting point boat landing. DRIVERS ONLY will:

- Turn right (north) out of the boat landing.
- Go 2.5 miles to US HWY 14 West.
- Turn left (West).
- Go 7 miles on US HWY 14 West to the town of Lone Rock.
- Turn left (south) onto WI 133 South.
- Follow WI 133 South for 28 miles to the town of Boscobel.
- When you get into Boscobel, you will go across a small bridge.
- Turn left onto Wisconsin Ave.
- Our shop is located .25 miles on your left across from Tall Tails convenience store.

Lone Rock Boat Landing

GPS Coordinates 43° 9' 38.76" North, 90° 11' 14.32" West

Description: This boat landing is located just up river from the WI 130/133 bridge and south of the town of Lone Rock 2.5 miles. There is also access to this boat landing from the south from US HWY 18. The boat landing is located on the left bank of the river.

From Madison:

- From I-90/39, exit 142A onto US HWY 12/18 West.
- Stay on US HWY 12 West to exit 266, US HWY 14 West toward Spring Green/La Crosse.
- Stay on US HWY 14 West for 37 miles to WI 130/133.
- Turn left (South) on WI 130/133 and go for 2.5 miles to the bridge.
- Turn left once you have crossed the bridge.
- The boat landing is on WI 130, just up river from the bridge on the left side of the road.

From the Boat Landing to Boscobel:

If you are ending your trip at our Boscobel take-out location, DROP OFF your passengers and gear at the starting point boat landing. DRIVERS ONLY will:

- Turn right out of the boat landing.
- Continue South on WI 133. DO NOT go back over the bridge.
- Follow WI 133 South for 27 miles to the town of Boscobel.
- When you get into Boscobel, you will go over a small bridge.
- Turn left onto Wisconsin Ave.
- Our shop is located .25 miles on your left across from Tall Tails convenience store.

Gotham Boat Landing

GPS Coordinates 43° 12' 44.11" North, 90° 18' 6.4" West

Description: Gotham boat landing is 23 river miles downriver from Boscobel. A bit of a challenge to find, but provides access to a secluded stretch of river. The boat landing is located on the right bank of the river.

From Madison:

- From I-90/39, exit 142A onto US HWY 12/18 West.
- Stay on US HWY 12 West to exit 266, US HWY 14 West toward Spring Green/La Crosse.
- Stay on US HWY 14 West for 42 miles to the town of Gotham.
- Turn left (West) onto WI 60 West.
- Go .3 miles on WI 60 West and make a left onto Fulton Street (just after The Bat Cave on the left).
- Go .5 miles on Fulton Street
- Take the first right.
- Follow this road all the way to the boat landing, another .8 miles.

From the Boat Landing to Boscobel:

If you are ending your trip at our Boscobel take-out location, DROP OFF your passengers and gear at the starting point boat landing. DRIVERS ONLY will:

- Return to WI 60.
- Turn left on WI 60 (West) for 8 miles to WI 80 South.
- Turn left (going South) on WI 80 for 1.3 miles through the town of Muscoda.
- Turn right (going West) before the railroad tracks onto WI 133 South
- Follow WI 133 South for 14 miles to the town of Boscobel.
- When you get into Boscobel, you will cross a small bridge.
- Turn left onto Wisconsin Ave.
- Our shop is located .25 miles on your left across from Tall Tails convenience store.

Muscoda Boat Landing

GPS Coordinates 43° 11' 58" North, 90° 26' 15.56" West

Description: Muscoda's boating landing is 16 miles downriver. A bit of a challenge to find, but provides access to a secluded stretch of river. The boat landing is located on the left bank of the river.

From Madison:

- From I-90/39, exit 142A onto US HWY 12/18 West.
- Stay on US HWY 18 for 58 miles (Beware: there are 2 exits for US 18 along the route).
- Take US 18 to the town of Cobb and WI 80.
- Turn right (going north) on WI 80.
- Stay on WI 80 for 17.5 miles.
- Where WI 133 and WI 80 merge, turn left (going West).
- Stay on WI 80 through the town of Muscoda.
- Turn right onto the last road before going over the bridge, into Victoria Riverside Park.
- Follow the road to just past the camp ground and turn left to go to the boat landing.

From the Boat Landing to Boscobel:

If you are ending your trip at our Boscobel take-out location, DROP OFF your passengers and gear at the starting point boat landing. DRIVERS ONLY will:

- Return to WI 80.
- Turn left and go back through the town of Muscoda.
- Before the railroad tracks, turn right onto WI 133
- Follow WI 133 for 14 miles to the town of Boscobel.
- When you get into Boscobel, you will cross a small bridge.
- Turn left onto Wisconsin Ave.
- Our shop is located .25 miles on your left across from the Tall Tails convenience store.

Port Andrews/Blue River Boat Landing

GPS Coordinates 43° 12' 17.9" North, 90° 34' 10.73" West

Description: The Port Andrews/Blue River boat landing is 8 miles from Boscobel. This 2.5-3 hour trip, not including lounging on sand bars for lunch and swimming, makes for the perfect single day leisurely trip and having the river to yourself. The boat landing is located on the right bank of the river before the bridge.

From Madison:

- From I-90/39, exit 142A onto US HWY 12/18 West.
- Stay on US HWY 18 for 58 miles (Beware: There are 2 exits for US 18 along the route).
- Take US 18 to the town of Cobb and WI 80.
- Turn right (going north) on WI 80.
- Stay on WI 80 for 17.5 miles .
- Where WI 133 and WI 80 merge, turn left (going west).
- Stay on WI 133 South, turning left after the railroad tracks.
- When you are coming into the town of Blue River, turn right (going north) onto County Highway T
- Stay on County Highway T for 1.5 miles to the Stop sign and WI 60.
- Turn right (going east) on WI 60.
- Go about 200 yards to the Port Andrews boat landing on the right.

From the Boat Landing to Boscobel:

If you are ending your trip at our Boscobel take-out location, DROP OFF your passengers and gear at the starting point boat landing. DRIVERS ONLY will:

- Reverse direction and return to WI 133 in the town of Blue River.
- Turn right onto WI 133 (going west) for 8 miles to the town of Boscobel.
- When you get into Boscobel, you will go over a small bridge.
- Turn left on to Wisconsin Ave.
- Our shop is located .25 miles on your left across from the Tall Tails convenience store.

Boscobel Shop

GPS Coordinates 43° 8' 14.3" North, 90° 42' 20.5" West

Physical Address: 715 Wisconsin Ave, Boscobel, WI 53805

Description: Boscobel is our original location. It is our headquarters and the start for a secluded, less traveled portion of the WI River. We are located in downtown Boscobel on a property with a renovated 1867 feed mill.

SPECIAL NOTE: If your trip is out of our Boscobel location, you will first drop off people and gear up river at your starting point put-in location. The drivers will then continue down river to our shop where we'll drive the drivers and the canoes back up river to the trip's starting point. In general, the only customers that should come directly to Boscobel are those leaving from the Boscobel boat landing and heading towards the Mississippi River and those groups that are only renting one canoe. All others should drop off passengers and gear FIRST and then have the drivers proceed to the shop following the directions to Boscobel in the boat landing directions.

From Madison:

- From I-90/39, exit 142A onto US HWY 12/18 West.
- Stay on US HWY 18 for 75 miles (Beware: There are 2 exits for US 18 along the route).
- Turn right (going north) onto US 61 in the town of Fennimore.
- Stay on US 61 for 10 miles to Boscobel.
- Cross the rail road tracks and turn right (going east) at the Phillips 66 gas station sign onto Le Grand Street.
- Take Le Grand Street to the end and turn right onto Wisconsin Ave. We are immediately on your left.

Woodman Boat Landing

GPS Coordinates 43° 4' 37.32" North, 90° 50' 45.2" West

Description: The Woodman Boat Landing is located west of the town of Woodman approximately 2 miles. The boat landing is located on the left bank of the river.

From Madison:

- From I-90/39, exit 142A onto US HWY 12/18 West.
- Stay on US HWY 18 for 86 miles (Beware: There are 2 exits for US 18 along the route).
- Go through the town of Fennimore on US HWY 18.
- 11 miles (west of) the town of Fennimore, turn right onto WI 133.
- Stay on WI 133 7.8 miles to the boat landing entrance on your left.

From the Boat Landing to Boscobel:

You most likely will only need these directions if Wisconsin River Outings is transporting your private canoes/kayaks or if you are interested in staging vehicles for the end of your trip.

- Make a left out of the boat landing onto WI 133.
- Stay on WI 133 for 8 miles through Woodman to the town of Boscobel.
- Turn left on WI 133/US 61 (going north).
- Cross the rail road tracks and turn right (going east) at the Phillips 66 gas station sign onto Le Grand Street.
- Take Le Grand Street to the end and turn right onto Wisconsin Ave. We are immediately on your left.

Millville Boat Landing

GPS Coordinates 43° 2' 3.91" North, 90° 57' 39.31" West

Description: Millville Boat Landing is probably the most remote boat landing we serve. It's a beautiful drive through the Driftless Area to get to the boat landing. If you are being picked up from Millville, be warned that cell reception is spotty at best.

From Madison:

- From I-90/39, exit 142A onto US HWY 12/18 West.
- Stay on US HWY 18 for 86 miles (Beware: There are 2 exits for US 18 along the route).
- Go through the town of Fennimore staying on US HWY 18.
- 11 miles west of the town of Fennimore, turn right (going north) on WI 133.
- Stay on WI 133 for .9 miles.
- Turn left onto Kassmaul Road for 4.6 miles.
- When you come to County Highway C, Turn left.
- Stay on County Highway C for 2.5 miles. The boat landing will be on your right.

From the Boat Landing to Boscobel:

You most likely will only need these directions if Wisconsin River Outings is transporting your private canoes/kayaks or if you're interested in staging vehicles for the end of your trip.

- Turn left out of the boat landing onto County Hwy C.
- Stay on County Hwy C for 7.5 miles to WI 133.
- Turn left on WI 133.
- Stay on WI 133 for 9.5 miles through Woodman to the town of Boscobel.
- Turn left on WI 133/US 61 (going north).
- Cross the rail road tracks and turn right (going east) at the Phillips 66 gas station sign onto Le Grand Street.
- Take Le Grand Street to the end and turn right onto Wisconsin Ave. We are immediately on your left.

Bridgeport Boat Landing

GPS Coordinates 43° 0' 5.3" North, 91° 3' 9.07" West

Description: The landing is located directly under US 18. For those who are not interested in paddling the Mississippi, this is the last chance to pull off the Wisconsin River.

From Madison:

- From I-90/39, exit 142A onto US HWY 12/18 West.
- Stay on US HWY 18 for 98 miles (Beware: There are 2 exits for US 18 along the route).
- The boat landing entrance is on the left side (going West) of the road. When you pull off US 18, go the right. The boat landing is directly under the bridge.

From the Boat Landing to Boscobel:

You most likely will only need these directions if Wisconsin River Outings is transporting your private canoes/kayaks or if you're interested in staging vehicles for the end of your trip.

- Turn left out of the boat landing onto US 18.
- Go over the river
- At the top of the hill, turn right (going east) on WI 60.
- Stay on WI 60 for 22 miles to US 61 South.
- Turn right onto US 61 South, going over the river and into the town of Boscobel.
- When in Boscobel, make a left at the Phillips 66 gas station sign (going east) onto Le Grand Street.
- Take Le Grand Street to the end and turn right onto Wisconsin Ave. We are immediately on the left.

3 Rivers Trip Directions

GPS Coordinates 43° 7' 24" North, 90° 54' 27" West

Description: You'll start off on the Kickapoo River, a few miles outside of Wauzeka, WI. You'll paddle for a couple of hours on the "Worlds Crookedest River", narrow, tree lined and with bluffs it seems you can reach out and touch. You'll then merge onto the Wisconsin River, wide, sandy and tree lined. You'll finish your trip paddling the Mighty Mississippi. This is a great trip for showing the variety of paddling you can do in one 3-day trip.

From Madison:

- From I-90/39, exit 142A onto US HWY 12/18 West.
- Stay on US HWY 12 West to exit 266, US HWY 14 West toward Spring Green/La Crosse.
- Stay on US HWY 14 West for 42 miles to the town of Gotham.
- Turn left onto WI 60 (going West).
- Stay on WI 60 for 35 miles to the town of Wauzeka.
- Go through town and the Z curve.
- Turn right onto County Highway N.
- Stay on County Highway N for 1 mile.
- While going up the hill, make a slight right onto Plum Creek Road.
- The boat landing is approximately 2.5 miles up Plum Creek Road. There is a turnaround drive and a park charcoal grill to identify the boat landing.

From the Boat Landing to Boscobel:

You most likely will only need these directions if Wisconsin River Outings is transporting your private canoes/kayaks or if you're interested in staging vehicles for the end of your trip.

- Reverse direction to get back to WI 60.
- Turn left onto WI 60 (going East), going through the town of Wauzeka.
- Stay on WI 60 for 10 miles to US 61 South.
- Turn right onto US 61 South over the river and into the town of Boscobel.
- When in Boscobel, turn left at the Phillips 66 gas station sign (going East) onto Le Grand Street.
- Take Le Grand Street to the end and turn right onto Wisconsin Ave. We are immediately on your left.

Town of Wyalusing Beach/Boat Landing

GPS Coordinates 42° 56' 52.02" North, 91° 8' 40.13" West

Description: Wyalusing State Beach is where most of our long distance trips end. When on the water, if you feel you missed this take out, keep going, you can't miss it. It has a large beach, parking lot and picnic facilities.

From Madison:

- From I-90/39, exit 142A onto US HWY 12/18 West.
- Stay on US HWY 18 for 93 miles (Beware: There are 2 exits for US 18 along the route).
- turn left onto County Highway P, approximately .5 miles from where WI 133 heads south to Patch Grove
- Stay on County Highway P for 4.9 miles. The road then turns into County Highway X.
- You will pass Wyalusing State Park while descending a long hill.
- When you reach the bottom of the hill, you will see the Mississippi River. The Town of Wyalusing Beach entrance is on your right. There's a large parking lot and beach. Park nearest the water.

From the Boat Landing to Boscobel:

You most likely will only need these directions if Wisconsin River Outings is transporting your private canoes/kayaks or if you're interested in staging vehicles for the end of your trip.

- Turn left out of the boat landing onto County Highway X.
- Follow County Highway X back past the State Park to the top of the hill.
- At the Dew Drop Inn, turn left on County Highway C.
- Stay on County Highway C until it runs into US 18.
- Turn left on US 18.
- Go over the river and turn right at the top of the hill onto WI 60 (going East).
- Stay on WI 60 for 22 miles to US 61 South.
- Turn right onto US 61 South, going over the river and into the town of Boscobel.
- When in Boscobel, turn left at the Phillips 66 gas station sign (going East) onto Le Grand Street.
- Take Le Grand Street to the end and turn right onto Wisconsin Ave. We are immediately on the left.